

MONTHLY MEMBERSHIP PROGRESS REPORT

District 201V5

Results as of: 12/31/2023

GMT:

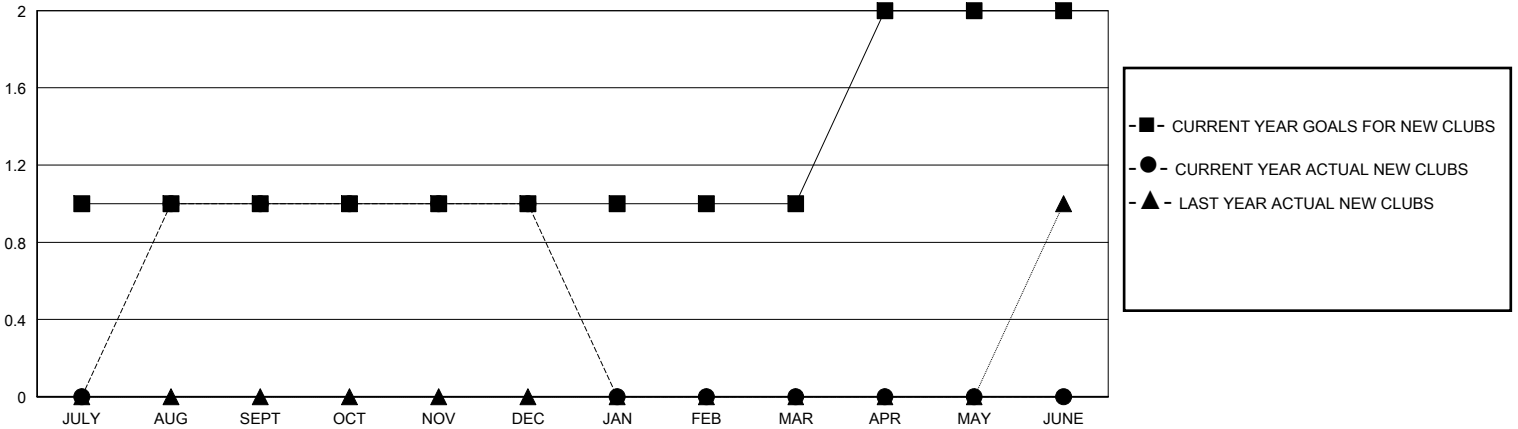
LOCATION AUSTRALIA

GMT CA

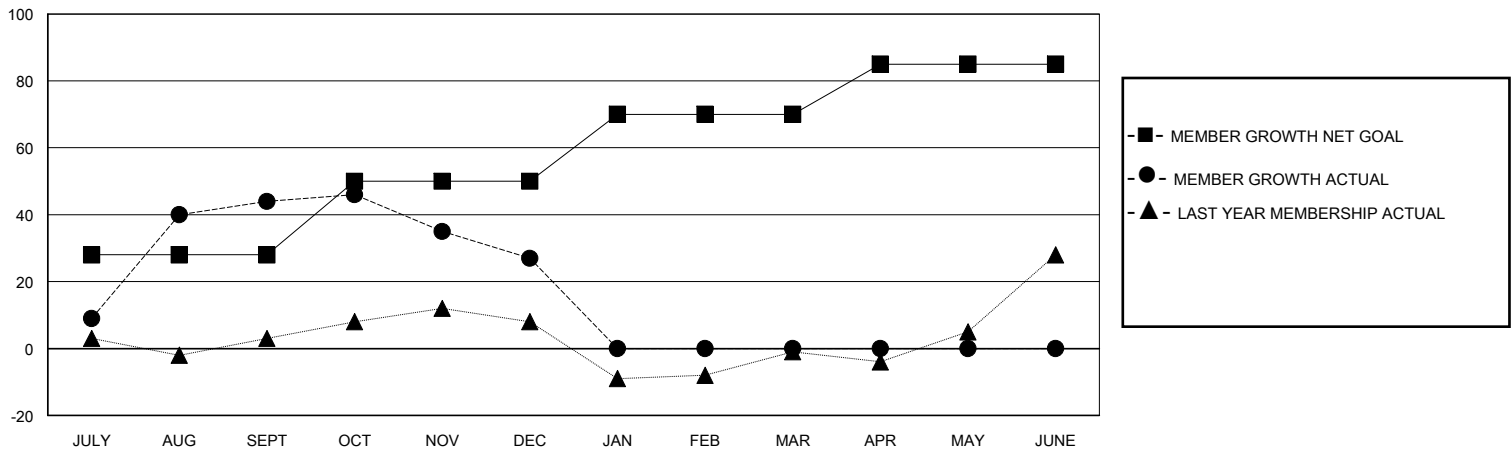
Clubs			
RESULTS FOR 2023-2024			
QUARTER	NEW CLUB GOAL	NEW CLUBS	DROPPED CLUBS
JULY/AUG/SEPT	1	1	1
OCT/NOV/DEC	0	0	0
JAN/FEB/MAR	0	0	0
APR/MAY/JUNE	1	0	0

Members			
RESULTS FOR 2023-2024			
QUARTER	MEMBER GROWTH NET GOAL	MEMBER GROWTH ACTUAL	DROPPED MEMBERS ACTUAL (including transfers)
JULY/AUG/SEPT	28	79	31
OCT/NOV/DEC	22	27	41
JAN/FEB/MAR	20	0	0
APR/MAY/JUNE	15	0	0

GOALS AND ACTUAL NEW CLUBS CUMULATIVE



GOALS AND ACTUAL MEMBERS CUMULATIVE



DROPPED CLUBS: 1	32 CLUBS OF 66 ADDED 1 OR MORE NEW MEMBERS	GENDER DISTRIBUTION MALE 794 (63.12%) FEMALE 457 (36.33%)
DROPPED MEMBERS DECEASED 4 CLUB CANCELLED 0 OTHER 68 TOTAL 72	CLICK HERE FOR CUMULATIVE MEMBERSHIP DATA	TOTAL FAMILY UNIT MEMBERS 148 FAMILY MEMBERS PAYING HALF DUES 77